

# Gwangju International interventional Cardiology Symposium

June 11(Thu)~13(Sat), 2026

24<sup>th</sup> KIMDAEJUNG CONVENTION CENTER, GWANGJU, KOREA



## Day 1 / June 11 (Thu)

Main Arena	
09:00 ~ 11:00	Public Education for Cardiovascular Disease 시민강좌 (전남대학교병원 명학홀)
18:30~19:30	Satellite Symposium On-going clinical trials in CNUH (Holiday Inn Gwangju)

## Day 2 / June 12 (Fri)

	Main Arena	Arena I	Arena II	Arena III
08:30	Opening Ceremony			
09:00 ~ 10:20	Live Case 1, 2 CNUH(AMI)/AMC(LM)	Asia-Pacific I	TAVR	Beginner Session
10:30~11:00	Coffee Break			
11:00 ~ 12:20	Live Case 3, 4 SNUH (CTO) / CNUH (CTO)	KAMIR-JAMIR	GICS-KSMI I	Meet the Masters I
12:30~13:00	GICS AWARD & Group Photo			
13:00~13:40	Sponsored Luncheon Session (Yuhan)	Sponsored Luncheon Session (Hanmi)	Sponsored Luncheon Session (Boston)	Sponsored Luncheon Session (Medtronic)
14:00~15:20	Live Case 5, 6 CNUH (Aorta) / YUHS (Aorta)	KCTA I Nurse & Allied Professionals Session I	DES I	Bifurcation
15:30~16:00	Coffee Break			
16:00~17:50	Live Case 7, 8 CNUH (IP) / KUMC (CHIP)	Cardiogenic Shock	Korea-London	Artificial Intelligence and Future Care
17:30	Group Photo			

## Day 3 / June 13 (Sat)

	Main Arena	Arena I	Arena II	Arena III
08:30				
09:00 ~ 10:20	Live Case 9,10 CNUH (TAVR)/JBNU (TAVR)	GICS-TAMIS	Critical Care in Cardiology	GICS-APCMC
10:30~11:00	Coffee Break			
11:00 ~ 12:20	Live Case 11,12 CNUH (Shock)/SNUHBH(Shock)	Aorta	DES II with KIMDS	GICS-KSMI II
12:30~13:10	Sponsored Luncheon Session (Donga ST)	Sponsored Luncheon Session (Jeil)	Sponsored Luncheon Session (Abbott)	
14:00~15:20	Meet the Masters II From idea to Publication	KCTA II Nurse & Allied Professionals Session II	CTO	Imaging and Physiology
15:30~16:00	Coffee Break			
16:00~17:20	Hot Trials in Korea	Asia-Pacific II Case Based Learning		Oral Competition
17:30	Award ceremony & A lottery for gift certificate			



# Gwangju International Cardiology Symposium

*Welcome*

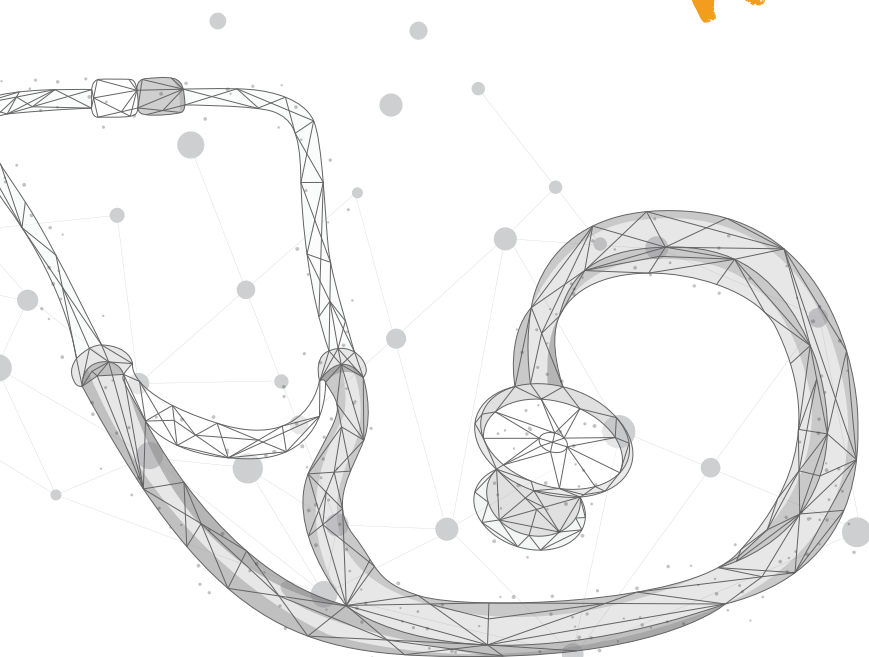
# 2026

**GWANGJU INTERNATIONAL  
INTERVENTIONAL  
CARDIOLOGY SYMPOSIUM**

**JUNE 11(Thu)~13(Sat), 2026**  
KIMDAEJUNG CONVENTION CENTER,  
Gwangju, South Korea

**HOSTED BY**

- Heart Center of Chonnam National University Hospital
- Woosim Heart Research Corporation
- Korea Tourism Organization
- Gwangju Tourism Organization



# Invitation

We wish to welcome you to the 24th Gwangju International Interventional Cardiology Symposium (GICS 2026) in Gwangju, a metropolitan city rich in cultural heritage and the economic and educational hub of the southwestern part of South Korea.

In GICS 2026, an international faculty of key opinion leaders will come together to give talks and lead discussions on the most recent advances and issues in the field of interventional cardiology from basic and translational science to clinical investigation. The symposium will also feature live case demonstrations, oral presentations, posters, and educational sessions for health professionals and local residents.

We hope that you will be able to join us for this important opportunity to share and exchange new experiences, facilitate the making of new acquaintances, and strengthen personal friendships among scientists from different parts of the world.

Thank you very much, and best wishes



# Gwangju International interventional Cardiology Symposium

June 11(Thu)~13(Sat), 2026

24th Gwangju International Interventional Cardiology Symposium  
KIMDAEJUNG CONVENTION CENTER, GWANGJU, KOREA

## Course Directors



Myung Ho Jeong  
MD, PhD



Youngkeun Ahn  
MD, PhD



Ju Han Kim  
MD, PhD



Young Joon Hong  
MD, PhD



Doo Sun Sim  
MD, PhD



Min Chul Kim  
MD, PhD



Kyung Hoon Cho  
MD, PhD



## Myung Hak Grand Auditorium of Chonnam National University

09:00 - 11:30 **Public Education for Cardiovascular Disease** 시민강좌

**Session 1 Moderator :** Ju Han Kim (Chonnam National Univ.)

- 09:00 - 09:15 심혈관질환의 위험인자: 고혈압에 대하여  
*Joon Ho Ahn (Chonnam National Univ.)*
- 09:15 - 09:30 심혈관질환의 위험인자: 이상지혈증에 대하여  
*Kyung Hoon Cho (Chonnam National Univ.)*
- 09:30 - 10:00 Discussion

**Session 2 Moderator :** Young Joon Hong (Chonnam National Univ.)

- 10:00 - 10:20 심혈관질환: 허혈성 심장질환과 심근경색증의 진단과 치료  
*Min Chul Kim (Chonnam National Univ.)*
- 10:20 - 10:40 심혈관질환: 허혈성 심근병증의 치료  
*Jae Yeong Cho (Chonnam National Univ.)*
- 10:40 - 11:00 심혈관질환: 허혈성 심장질환과 관련된 부정맥의 진단 및 치료  
*Hyung Wook Park (Chonnam National Univ.)*
- 11:00 - 11:30 Discussion

## Holiday inn Hotel in Gwangju

**18:30 - 19:30 Satellite Symposium** On-going clinical trials in CNUH  
**Moderator :** Myung Ho Jeong (Gwangju Veterans Hosp.), Youngkeun Ahn (Chonnam National Univ.), Wei-Chun Huang ( Pingtung Christian Hosp., TAIWAN)

**Panelist :** Christos Bourantos (Queen Mary University of London, UK),  
Juan Luis Gutiérrez-Chico (Jena University Hospital, Germany),  
Masashi Fujino (National Cerebral and Cardiovascular Center, Japan), Flavia Geraldes (The Lancet, UK),  
Ju Han Kim (Chonnam National Univ.), Young Joon Hong (Chonnam National Univ.),  
Doo Sun Sim (Chonnam National Univ.), Min Chul Kim (Chonnam National Univ.)

- 18:30 - 18:40 **DAPT SIRO Trial**  
*Dae Young Hyun (Chonnam National Univ.)*
- 18:40 - 18:50 **FRAME AMI 3 Trial**  
*Joon Ho Ahn (Chonnam National Univ.)*
- 18:50 - 19:00 **TIMING AHF Trial**  
*Yongwhan Lim (Chonnam National Univ.)*
- 19:00 - 19:30 Discussion

3F Main Arena

**09:00 - 10:20** **Live Case 1, 2** CNUH(AMI)/AMC(LM) **ENG**  
**Moderator** : Kirk N Garratt (Christiana Care, USA), Myung Ho Jeong (Gwangju Veterans Hosp.),  
Tae Hoon Ahn (Na-Eun Hosp.)  
**Panelist** : Christos Bourantos (Queen Mary University of London, UK), Xian Wu Cheng (Yanbian Univ),  
Weon Kim (Kyung Hee Univ.), Eun-Seok Shin (Ulsan University Hosp),  
Young-Hoon Jeong (Chung-Ang Univ.), Joo-Yong Hahn (Sungkyunkwan Univ.),  
Soon-Joon Hong (Korea Univ.), Yi Sik Kim (Jeonbuk National Univ),  
Jang-Ho Bae (Konyang University Hosp.)

09:00 - 09:30 **Case 1 (CNUH) : AMI**  
*1st operator* : Youngkeun Ahn (Chonnam National Univ.)  
*2nd operator* : Kyung Hoon Cho (Chonnam National Univ.)  
*Imaging Commentator* : Joon Ho Ahn (Chonnam National Univ.)

09:30 - 09:35 **Case 1 : Wrap-up**

09:35 - 09:45 **Featured lecture: Seeing More or Doing Too Much? The Intravascular Imaging Debate in PCI**  
*Malcolm R Bell (Mayo Clinic, USA)*

09:45 - 10:15 **Case 2 (AMC) : LM**  
*1st operator* : Jung-Min Ahn (Asan Medical Center)  
*2nd operator* : Do-Yoon Kang (Asan Medical Center)  
*3rd operator* : Joo Hyun Kim (Asan Medical Center)

10:15 - 10:20 **Case 2 : Wrap-up**

10:30 - 11:00 **Coffee Break**

**11:00 - 12:20** **Live Case 3, 4** SNUH (CTO)/ CNUH (CTO) **ENG**  
**Moderator** : Yoshihisa Kinoshita (Toyohashi Heart Center, Japan), Hee Yeol Kim (Catholic Univ.),  
Hun Sik Park (Kyung Pook National Univ.)  
**Panelist** : Yu-Chen Wang (Asia University Hosp., Taiwan), Chien-Yu Hsu (Taipei Medical University Hosp, Taiwan),  
Cheng-Hsueh Wu (Taipei Veterans General Hosp., Taiwan), Kyeong Ho Yun (Wonkwang Univ.),  
Cheol Ung Choi (Korea Univ.), Jon Suh (SoonChunHyang Univ.),  
Jae-Hwan Lee (Chungnam National Univ.), Sanghoon Shin (Ewha Univ.)

11:00 - 11:30 **Case 3 (SNUH) : CTO**  
*1st operator* : Jung-Kyu Han (SNUH.)

11:30 - 11:35 **Case 3 : Wrap-up**

11:35 - 11:45 **Featured lecture: Efficacy of dual-preparation (debulking plus IVL) before stent implantation for severely calcified coronary lesions**  
*Satoru Otsuji (Higashi Takarazuka Satoh Hosp., Japan)*

11:45 - 12:15 **Case 4 (CNUH): CTO**  
*1st operator* : Dae Young Hyun (Chonnam National Univ.)  
*2nd operator* : Sang Hoon Lee (Chonnam National Univ.)  
*IVUS Commentator* : Joon-Hyung Doh (Inje Univ.)

12:15 - 12:20 **Case 4 : Wrap-up**

**12:30 - 13:00** **GICS AWARD & Group photo**

- 13:00 - 13:30**    **Sponsored Luncheon Session** Yuhan **KOR**  
**Moderator :** Myung Ho Jeong (Gwangju Veterans Hosp.), Youngkeun Ahn (Chonnam National Univ.)
- 13:00 - 13:15    **Paving the Road for Optimal LDL-C Management : New Evidence on intensive LDL-C targeting from the Ez-PAVE Trial**  
*Seok Oh (Chonnam National Univ.)*
- 13:15 - 13:30    **Evolution of Dyslipidemia Guidelines with the 2026 ACC/AHA Updates: Finding the Role of Rosuvamibe**  
*Dae-Hwan Bae (Bucheon Sejong Hosp.)*
- 14:00 - 15:20**    **Live Case 5, 6** CNUH (Aorta)/YUHS (Aorta) **ENG**  
**Moderator :** Ross Milner (University of Chicago), In-Ho Chae (Seoul National Univ.),  
 Jae-Hwan Lee (Chungnam National Univ.)  
**Panelist :** Yoshimasa Seike (NCVC, Japan), Sang Min Kim (Chungbuk National Univ.),  
 Han Cheol Lee (Pusan National Univ.), Woong Chol Kang (Gachon Univ.), Wonho Kim (Eulji Univ.),  
 Yong Hwan Park (Samsung Changwon Hosp.),  
 In Tae Jin (Yonsei Univ.)
- 14:00 - 14:30    **Case 5 (CNUH) : Aorta**  
*1st operator : Ju Han Kim (Chonnam National Univ.)*  
*2nd operator : Joon Ho Ahn (Chonnam National Univ.)*
- 14:30 - 14:35    **Case 5 : Wrap-up**
- 14:35 - 14:45    **Featured lecture : Endovascular Aortic Arch Repair with NEXUS portfolio : from features to clinical evidence**  
*Ross Milner (Univ. Chicago, USA)*
- 14:45 - 15:15    **Case 6 (YUHS): Aorta**  
*1st operator : Chul-Min Ahn (YUHS)*  
*2nd operator : Hyun-Su Ha (YUHS)*
- 15:15 - 15:20    **Case 6 : Wrap-up**
- 15:30 - 16:00    **Coffee Break**
- 16:00 - 17:20**    **Live Case 7, 8** CNUH (IP) / KUMC(CHIP) **ENG**  
**Moderator :** Naoto Inoue (Tokyo Heart Center, JAPAN), Bon-Kwon Koo (Seoul National Univ.),  
 Jang Hyun Cho(St. Carollo Hosp.)  
**Panelist :** Kensaku Nishihira (Miyazaki Medical Association Hospital, Japan),  
 Takashi Kubo (Tokyo Medical Univ, Japan), Bill Gogas (Metropolitan General Hospital, Greece),  
 Joon-Hyung Doh (Inje Univ.), Jung Ho Heo (Kosin Univ.), Seong-Hoon Lim (Dankook Univ.),  
 So-Yeon Choi (Ajou Univ.), Keun Ho Park (Chosun Univ.)
- 16:00 - 16:30    **Case 7 (CNUH): IP**  
*1st operator : Young Joon Hong (Chonnam National Univ.)*  
*2nd operator : Joon Ho Ahn (Chonnam National Univ.)*  
*Imaging Commentator : Sung Yun Lee (Seoul Medical Center)*
- 16:30 - 16:35    **Case 7 : Wrap-up**
- 16:35 - 16:45    **Featured lecture : IVUs guided PCI in contemporary practice**  
*Bill Gogas (Metropolitan General Hospital, Greece)*
- 16:45 - 17:15    **Case 8 (KUMC): CHIP**  
*1st operator : Hyuck-Jun Yoon (KUMC)*  
*2nd operator : Cheol-Hyun Lee (KUMC)*
- 17:15 - 17:20    **Case 8 : Wrap-up**

2F Arena I

09:00 - 10:20

Asia-Pacific I **ENG**

**Moderator :** Yoshihisa Kinoshita (Toyohashi Heart Center, Japan), Kyoo-Rok Han (Hallym Univ.),  
Young Joon Hong (Chonnam National Univ.)

**Panelist :** Donna Shu-Han Lin (Shin Kong Wu-Su Memorial Hosp., Taiwan),  
Teruo Noguchi (National Cerebral and Cardiovascular Center, Japan),  
Jun Takahashi (Tohoku Univ., Japan), Zhe-Hao Piao (Wenzhou Univ., China),  
Ting Yin (The Second Affiliated Hospital of Zhejiang Univ., China), Seong-Hoon Lim (Dankook Univ.),  
Hong Seok Lim (Ajou Univ.), Chang-Hwan Yoon (Seoul National Univ.)

09:00 - 09:15

**Systematic approach to calcified nodules based on intravascular imaging**

*Takashi Kubo (Tokyo Medical Univ., Japan)*

09:15 - 09:30

**Optimal Plaque Modification in Calcified Lesions (Strategy 1): Rotational Atherectomy+Cutting balloon**

*Yoshihisa Kinoshita (Toyohashi Heart Center, Japan)*

09:30 - 09:45

**Optimal Plaque Modification in Calcified Lesions (Strategy 2): IVL**

*Joo Myung Lee (Sungkyunkwan Univ)*

09:45 - 10:00

**Optimal Plaque Modification in Calcified Lesions (Strategy 3): Orbital atherectomy**

*Ajar Kochar (Brigham and Women's Hosp., USA)*

10:00 - 10:20

**Discussion**

10:30 - 11:00

*Coffee Break*

11:00 - 12:20

KAMIR-JAMIR **ENG**

**Moderator :** Satoshi Yasuda (Tohoku Univ., Japan), Myung Ho Jeong (Gwangju Veterans Hosp.),  
Weon Kim (Kyung Hee Univ.),

**Panelist :** Yu Kataoka (National Cerebral and Cardiovascular Center, Japan),  
Kensaku Nishihira (Miyazaki Medical Association Hosp., Japan), Joo-Yong Hahn (Sungkyunkwan Univ.),  
Kyung Hoon Cho (Chonnam National Univ.), Taek-Geun Kwon (Chungbuk National Univ.),  
Jin Bae Lee (Daegu Catholic Univ.), Doo Sun Sim (Chonnam National University Hosp.)  
Dae Young Cheon (Hallym Univ.)

11:00 - 11:15

**Recent Publications from the KAMIR**

*Seok Oh (Chonnam National University Hosp.),*

11:15 - 11:30

**JAMIR-KAMIR-Collaborative Study and consensus paper of East-Asian AMI**

*Satoshi Honda (National Cerebral and Cardiovascular Center, Japan)*

11:30 - 11:45

**The progress of JAMIR-2; Sex disparities in AMI in Japan**

*Jun Takahashi (Tohoku Univ., Japan)*

11:45 - 12:00

**Future Directions on KAMIR-JAMIR collaboration**

*Kyung Hoon Cho (Chonnam National Univ.),*

12:00 - 12:20

**Discussion**

12:30 - 13:00

**GICS AWARD & Photo Time**

**13:00 - 13:40**    **Sponsored Luncheon Session Hanmi** KOR  
**Moderator :** Bon-Kwon Koo (Seoul National Univ.), Young Joon Hong (Chonnam National Univ.)  
**Panelist :** Soohyung Park (Korea Univ.), Hyun Kuk Kim (Chosun Univ.),  
 Yongwhan Lim (Chonnam National Univ.), Dae Young Cheon (Hallym Univ.)

13:00 - 13:15    **Beyond The Statin, ROSUZET; Start Early, Switch Now**  
*Min Chul Kim (Chonnam National Univ.)*

13:15 - 13:30    **Strategic Antiplatelet Therapy for Secondary Prevention of Cardiovascular Disease**  
*Song Yi Kim (Jeju National Univ.)*

13:30 - 13:40    **Discussion**

**14:00 - 15:20**    **KCTA I Nurse & Allied Professionals Session** KOR  
**Facilitator :** Doo-Hwan Lee (Chonnam National University Hosp.)

**Session 1**        **Coronary Intervention : DCB (drug coating balloon)**  
**Moderator :** Yong Hak Shin (Gangnam Severance Hosp.), Se-Yeong Lim (Samsung Medical Center)  
**Panelist :** Seong Tae Jeong (ST. Carollo Hosp.), Seon Bae Kim (Asan Medical Center),  
 Yong Chan Jo (Chungnam National University Hosp.), Byeong Joo Park (Jeju National University Hosp.),  
 Dal Won Kang (Chung-Ang University Hosp.), Seung Cheol Park (Gangneung Asan Hosp.),  
 Sang-Hyeon Park (Mokpo Jung-Ang Hosp.)

14:00 - 14:10    **DCB Therapy : Recent Updates**  
*Jin Ho Kim (Catholic University , Seoul ST. Mary's Hosp.)*

14:10 - 14:20    **DCB Therapy : How Can We Increase Its Effectiveness?**  
*Dae Seok Jang (Yongin Severance Hosp.)*

14:20 - 14:30    **Hybrid Approach of DCB in Complex Lesion**  
*Tae Woo Kim (The Catholic Univ. of Korea, eunpyeong ST. Mary's Hosp.)*

14:30 - 14:40    **Discussion**

**Session 2**        **Coronary Intervention : Calcified Lesion**  
**Moderator :** Joon Won Kang (Korea University Anam Hosp.), Sung Il Baik (Severance Cardiovascular Hosp.)  
**Panelist :** Hyun Cheol Choi (Keimyung University Dongsan Hsop.), Nak Jung Ju (Chosun University Hosp.),  
 Do Hyung Lim (The Catholic University of Korea, Incheon ST. Mary's Hosp.),  
 Do-Sik Kim (Miraero 21 Medical Center), Dae Young Lee (Presbyterian Medical Center),  
 Kyu Sung Lee (Iksan Hosp.), Jin-Seok Roh (Asan Medical Center), Myeong Bo Shim (NHIS Ilsan Hosp.)

14:40 - 14:50    **Imaging Evaluation (CT, IVUS, OCT) of Coronary Artery Calcification Lesions**  
*Seung Yong Lee (Asan Medical Center)*

14:50 - 15:00    **Optimizing Treatment for Severely Calcified Lesion**  
*Ye In Noh (Bucheon Sejong Hosp.)*

15:00 - 15:10    **IVL Clinical Updates & Outcomes**  
*Heon Seop Kim (SamSung Medical Center)*

15:10 - 15:20    **Discussion**

15:30 - 16:00    **Coffee Break**

16:00 - 17:20

### Cardiogenic Shock **KOR**

**Moderator :** Kyung Woon Jung (Chonnam National Univ.), Min Chul Kim(Chonnam National Univ.)

**Panelist :** Woo Yaul Lee (ROKA), Hyoung Won Cho (Seoul National Univ.), Yonghoon Shin (Korea Univ.),  
In Tae Jin (Yonsei Univ.), Daehwan Bae (Bucheon Sejong Hosp.),  
Eun Jin Park (Korea Univ.), Jeong- Tae Byoun(Wongkwang Univ.)

16:00 - 16:15

### Establishing and Optimizing CICU and Team-Based Management for Cardiogenic Shock

*Ah-Ram Kim (Asan Medical Center)*

16:15 - 16:30

### Perspectives on ECMO in Cardiology in South Korea after impella introduction

*Yongwhan Lim (Chonnam National Univ. )*

16:30 - 16:45

### Back to Basics: Medical Therapy in Cardiogenic Shock

*Sang-Hyup Lee (Yonsei Univ.)*

16:45 - 17:00

### Cardiogenic Shock Research in South Korea: Toward Better Future Directions

*Min Chul Kim (Chonnam National Univ.)*

17:00 - 17:20

### Discussion

## 2F Arena II

09:00 - 10:20

### TAVR **ENG**

**Moderator :** Eberhard Grube (University Hospital Bonn, Germany), Ju Han Kim (Chonnam National Univ.),  
Kiyuk Chang (Catholic Univ.)

**Panelist :** Ariel Finkelstein (Tel Aviv Medical Center, Israel),  
Futoshi Yamanaka (Shonan Kamakura General Hosp., Japan),  
Sang-Rok Lee (Jeonbuk National Univ.), Yong Hwan Park (Samsung Changwon Hosp.),  
Yochun Jung (Chonnam National Univ.), Ha-Wook Park (Bucheon Sejong General Hosp.),  
Dae Young Hyun (Chonnam National Univ.), Hoyoun Won (Chung-Ang Univ.)

09:00 - 09:12

### TAVI with minimal calcium

*Angus Chui (Queen Elizabeth Hospital, HK)*

09:12 - 09:24

### The Good, the Bad, and the Unexpected in BASILICA

*Daisuke Hachinohe (Sapporo Cardio Vascular Clinic, Japan)*

09:24 - 09:36

### 4D ICE guided TAVR

*Jun Hwan Cho (Chung-Ang Univ)*

09:36 - 09:48

### Procedural strategies: Valve in valve TAVR

*Ung Kim (Yeungnam Univ)*

09:48 - 10:00

### TAVR in patients at risk of coronary artery obstruction

*Byung-Hee Hwang (Catholic Univ.)*

10:00 - 10:20

### Discussion

10:30 - 11:00

### Coffee Break

**11:00 - 12:20** **GICS-KSMI I** **ENG**  
**Moderator :** Young Joon Hong (Chonnam National Univ.), Sung Kee Ryu (Ewha Womans Univ.)  
**Panelist :** Jang-Hoon Lee (Kyungpook National Univ.), Jung Ho Heo (Kosin University),  
 Young Jin Youn (Yonsei Univ.), Sang Hyun Kim (Catholic Univ.), Hoyoun Won (Chung-Ang Univ.),  
 Chang Hoon Kim (Jeonbuk National Univ.), Chang-Hwan Yoon (Seoul National Univ.)

11:00 - 11:15 **FFR-guided Multivessel PCI in AMI: Does it have role?**  
*Sodam Jeong (Ewha Womans Univ.)*

11:15 - 11:30 **Image-guided PCI in AMI: Intracoronary imaging for Better Clinical Outcomes**  
*Joon Ho Ahn (Chonnam National Univ.)*

11:30 - 11:45 **Hemodynamic Support in Cardiogenic Shock: Evidence and Controversies**  
*Teruo Noguchi (National Cerebral and Cardiovascular Center, Japan)*

11:45 - 12:00 **Novel Reperfusion Therapeutics in AMI**  
*Ajar Kochar (Brigham and Women's Hosp., USA)*

12:00~12:20 **Discussion**

**12:30 - 13:00** **GICS AWARD & Photo Time**

**13:00 - 13:40** **Sponsored Luncheon Session / Tapped (Boston)** **KOR**  
**Moderator :** Young Joon Hong (Chonnam National Univ.)  
**Panelist :** Choongki Kim (Ewha Womans Univ.), Sang Yeub Lee (Chung Ang Univ.)  
 Keun Ho Park (Chonsun Univ.)

13:00 - 13:15 **From plaque modification to optimal stent implantation: IVUS guided combination strategies with WOLVERNIETM and ROTAPROTM**  
*Joon Ho Ahn (Chonnam National Univ.)*

13:15 - 13:30 **See and AGENTTM Drug : Real-World Case-Based Strategies for Complex Lesions**  
*Doyeon Hwang (Seoul National Univ.)*

13:30 - 13:40 **Discussion**

14:00 - 15:20

**DES I** **ENG**

**Moderator :** Dong Keun Han (Cha Univ.)

**Panelist :** Takahito Doi (Kyoto Prefectural Univ., Japan),  
Heleen van Beusekom (Erasmus University Medical Center, the Netherlands),  
Futoshi Yamanaka (Shonan Kamakura General Hosp., Japan),  
Dae Sung Park (Chonnam National University Hosp., Korea), In-Kyu Park (Chonnam National Univ.),  
Jong Shin Woo (Kyung Hee Univ., Korea)

14:00 - 14:15

**Five years of research on the genetic basis of FV in AMI: A slippery slope of MiRNA, Cholesterol Pathways, Copy Number Variations, Ion Channels and Telomer**

*Manuel Hermida-Prieto (Hosp. Universitario de La Coruna, Spain)*

14:15 - 14:30

**Pro-healing coronary stent**

*Doo Sun Sim (Chonnam National Univ.)*

14:30 - 14:45

**Innovative Phage-Based Antimicrobials to Safeguard the Heart Against Device-Related Infections**

*Luis Marinas Pardo (Instituto de Salud Carlos III, Spain)*

14:45 - 15:00

**Contralateral Side Branch Protection**

*Juan Luis Gutiérrez-Chico (Jena University Hosp., Germany)*

15:00 - 15:20

**Discussion**

15:30 - 16:00

**Coffee Break**

16:00 - 17:40

**Korea-London** **ENG**

**Session1**

**New insights from interventional cardiology**

**Chairs :** John Martin (University College London, UK), Myung Ho Jeong (Gwangju Veterans Hosp., Korea)

**Moderator :** Myung Ho Jeong (Gwangju Veterans Hosp.), John Martin (Univ. College London, UK)

**Panelist :** Weon Kim (Kyung Hee Univ.), Sang-Wook Kim (Chung-Ang Univ.),  
Satoshi Honda (National Cerebral and Cardiovascular Center, JAPAN),  
Anantharaman Ramasamy (Barts Heart Centre, UK)

8.00 - 8.10 am

**Thrombosis is the next frontier**

4.00 - 4.10 pm

*John Martin (University College London, UK)*

8.10 - 8.20 am

**CTA for planning PCI a cautionary tale**

4.10 - 4.20 pm

*Christos Bourantos (Queen Mary University of London, UK)*

8.20 - 8.30 am

**Survival after AMI in South Korea and the UK**

4.20 - 4.30 pm

*Doo Sun Sim (Chonnam National University Hosp., Korea)*

8.30 - 8.40 am

**After CABG, never again without Cardiac CT**

4.30 - 4.40 pm

*Daniel A Jones (Queen Mary University of London, UK)*

8.40 - 8.50 am

**Discussion**

4.40 - 4.50 pm

**Session2**

**Frontiers in cardiovascular regenerative medicine**

**Chairs :** Anthony Mathur (Queen Mary University of London, UK),  
Youngkeun Ahn (Chonnam National University Hosp., Korea),

**Moderator :** Youngkeun Ahn (Chonnam National Univ.), Anthony Mathur(Queen Mary Univ. of London, UK)

**Panelist :** Yong Sook Kim (Chonnam National Univ. Hosp.),  
Gwang Hyeon Eom (Chonnam National Univ. Hosp.),  
Somy Yoon (Chonnam National Univ.), Luis Mariñas Pardo (Instituto de Salud Carlos III, SPAIN)

- 8.50 - 9.00 am     **Circulatory Support Assisted Cell Therapy for Heart Failure**  
4.50 - 5.00 pm     *Anthony Mathur (Queen Mary Univ. of London, UK)*
- 9.00 - 9.10 am     **Primary PCI in Vein Grafts Presenting with STEMI: To DCB or not to DCB?**  
5.00 - 5.10 pm     *Krishnaraj Rathod (Queen Mary Univ. of London, UK)*
- 9.10 - 9.20 am     **Engineering Pluripotent Stem Cells-derived Organoids with Enhanced Maturation  
and Reproducibility by Micro and Nano-Topographical Cues**  
5.10 - 5.20 pm     *Jangho Kim (Chonnam National University, Korea)*
- 9.20 - 9.30 am     **PLXND1 couples disturbed flow to endothelial inflammatory activation and atherosclerosis**  
5.20 - 5.30 pm     *Vedanta Mehta (University of Oxford, UK)*
- 9.30 - 9.40 am     **Discussion**  
5.30 - 5.40 pm

**2F Arena III**

**09:00 - 10:20**

**Beginner Session** KOR

**Moderator :** Kyeong Ho Yun (Wonkwang Univ.), Keun Ho Park (Chosun Univ.),  
Song Yi Kim (Jeju National Univ Hosp)

**Panelist :** Ho Young Son (Chonnam National Univ.), Yeon Heo (Chonnam National Univ.),  
Seong Won Jeon (ROKA), Yong-Kyu Lee (Seoul National Univ.), Jeong Tae Byeon (Wonkwang Univ.),  
Hye Rim Moon (Presbyterian Medical Center), Woo Yaul Lee (ROKA)

- 09:00 - 09:15     **A Small Leak, A Big Trouble: Delayed Cardiac Tamponade After Apparently Successful PCI**  
*Dong Hyun Joo (Wonkwang Univ.)*
- 09:15 - 09:30     **Ventricular Tachycardia After Aortic Surgery: Rescue PCI**  
*In Tae Jin (Yonsei Univ.)*
- 09:30 - 09:45     **Beyond the Guidelines: Managing Postpartum Massive PE in a Resource-Limited Setting**  
*Seong Ho Park (Mokpo Hankook Hosp.)*
- 09:45 - 10:00     **Calcium Modification for a Heavily Calcified Left Main Bifurcation**  
*Dong Hyun Gim (Sungkyunkwan Univ)*
- 10:00-10:20     **Discussion**

11:00 - 12:20

### Meet the Masters I **ENG**

**Moderator :** Kirk N Garratt (Christiana Care, USA), Youngkeun Ahn (Chonnam National Univ.), Eun-Seok Shin (Ulsan University Hosp)

**Panelist :** Woong-Gil Choi (Chungbuk National Univ.), Seung Jin Lee (Soonchunhyang Univ.), Seung Hwan Han (Gachon Univ.), Song Yi Kim (Jeju National Univ Hosp), Jong Shin Woo (Kyung Hee Univ Hosp), So Yeon Choi (Ajou Univ.)  
Woong Chol Kang (Gachon Univ.), Sang-Rok Lee (Jeonbuk National Univ.)

11:00 - 11:15

### Seeing More or Doing Too Much? The Intravascular Imaging Debate in PCI

*Malcolm R Bell (Mayo Clinic, USA)*

11:15 - 11:30

### Histone Deacetylase 8: An emerging target in cardiac remodeling and fibrosis

*Thomas Kurz (Heinrich Heine University Duesseldorf)*

11:30 - 11:45

### PAI-1 Acts as A Good Guy or Bad guy in Cardiovascular Disease Progression?

*Xian Wu Cheng (Yanbian Univ., China)*

11:45 - 12:00

### DK Crush vs Minicrush: When NOT to Perform DK Crush — Real-World Decision Making in High-Risk LM PCI

*Kenji Wagatsuma (Yamanakako Clinic/Tokyo D tower Hosp., JAPAN)*

12:00 - 12:20

### Discussion

12:30 - 13:00

### GICS AWARD & Photo Time

13:00 - 13:40

### Sponsored Luncheon Session / Tapped (Medtronic) **KOR**

**Moderator :** Jang Hyun Cho (St. Carollo Hosp.)

**Panelist :** Hyun Woo Park (Soonchun Hyang University Hosp.), Dong Oh Kang (Korea Univ Hosp.), Jin Bae Lee (Daegu Catholic Univ.)

13:00 - 13:15

### Beyond Stents: Expanding the Role of Drug-Coated Balloon in Contemporary PCI

*Su-Jin Kim (Koshin Univ.)*

13:15 - 13:30

### Next-Generation PCI: The Hybrid Era

*Sodam Jeong (Ewha Womans Univ.)*

13:30 - 13:40

### Discussion

**14:00 - 15:20**    **Bifurcation** ENG  
**Moderator** : Chang-Wook Nam (Keimyung Univ.), Bon-Kwon Koo (Seoul National Univ.)  
**Panelist** : Bill Gogas (metropolitan General Hospital, Greece), Ajar Kochar (Brigham and Women's Hospital, USA),  
 Young-Jin Youn (Yonsei Univ.), Joo Myung Lee(Sungkyunkwan Univ.),  
 Hyun Kuk Kim (Chosun Univ.), Sang Hyun Kim (Catholic Univ.), Sang Yeub Lee (Chung Ang Univ.),  
 Soohyung Park(Korea Univ)

14:00 - 14:15    **How I use intravascular imaging in bifurcation**  
*Takashi Kubo (Tokyo Medical University, Japan)*

14:15 - 14:30    **How I solve the challenge of Medina 0,0,1 lesions**  
*Sunao Nakamura (New Tokyo Hospital, Japan)*

14:30 - 14:45    **How I use DCB in bifurcations**  
*Dong Oh Kang (Korea Univ.)*

14:45 - 15:00    **How I use antithrombotics after bifurcation PCI**  
*Kyung Hoon Cho (Chonnam National Univ.)*

15:00 - 15:20    **Discussion**

15:30 - 16:00    *Coffee Break*

**16:00 - 17:20**    **Artificial Intelligence and Future Care** ENG  
**Moderator** : Jin Hyung Lee (Stanford Univ., USA), Ju Han Kim (Chonnam National Univ.)  
**Panelist** : Hao-Yun Lo (Shin Kong Wu Ho-Su Memorial Hosp., Taiwan),  
 Cheng Hung Chiang (Kaohsiung veteran general Hosp., Taiwan),  
 Yu-Chen Wang (Asia University Hosp., Taiwan),  
 Ting Yin (The Second Affiliated Hospital of Zhejiang University, China),  
 Ki-Hyun Jeon (Seoul National Univ.), Sung A Bae (Yonsei Univ.),  
 Sang Geon Cho (Chonnam National Univ.), Kyung Hoon Cho (Chonnam National Univ.)

16:00 - 16:20    **AI-enabled Brain Healthcare and its Implication for Cardiovascular Healthcare**  
*Jin Hyung Lee (Stanford Univ., USA)*

16:20 - 16:40    **Artificial Intelligence Foundation Model in Medicine**  
*Yunshu Chen (Monash Univ., Australia)*

16:40 - 17:00    **Artificial Intelligence in Electrocardiography**  
*Joon-Myung Kwon (Medical AI Corp.)*

17:00 - 17:20    **Discussion**

3F Main Arena

**09:00 - 10:20** **Live Case 9,10 / CNUH (TAVR) / JBNU (TAVR)** **ENG**  
**Moderator :** Ariel Finkelstein (Tel Aviv Medical Center, Israel), Myeong-Ki Hong(Yonsei Univ.),  
Ju Han Kim (Chonnam National Univ.),  
**Panelist :** Futoshi Yamanaka (Shonan Kamakura General Hospital, Japan),  
Daisuke Hachinohe (Sapporo Cardio Vascular Clinic, Japan), Cheol Ung Choi (Korea Univ.),  
Ha-Wook Park (Bucheon Sejong General Hosp.), Sang-Wook Kim (Chung-Ang Univ.),  
Byung-Hee Hwang (Catholic Univ.), Kyeong Ho Yun (Wonkwang Univ.),  
Do-Yoon Kang (Asan Medical Center)

09:00 - 09:30 **Case 9 (CNUH): TAVR**  
**1st operator :** Ju Han Kim (Chonnam National Univ.)  
**2nd operator :** Dae Young Hyun (Chonnam National Univ.)

09:30 - 09:35 **Case 9 : Wrap-up**

09:35 - 09:45 **Featured lecture: At a crossroads: Transforming TAVI from a safe & doable Procedure towards Precision Medicine**  
*Eberhard Grube (University Hospital Bonn, Germany)*

09:45 - 10:15 **Case 10 (JBNU) : TAVR**  
**1st operator :** Sang-Rok Lee(Jeonbuk National Univ.)  
**2nd operator :** Yi Sik Kim (Jeonbuk National Univ.)

10:15 - 10:20 **Case 10 : Wrap-up**

10:30 - 11:00 **Coffee Break**

**11:00 - 12:20** **Live Case 11, 12 CNUH (Shock)/SNUHBH (Shock)** **ENG**  
**Moderator :** Malcolm R Bell (Mayo Clinic, USA), Chris Kwok Yiu Wong (St. Paul's Hospital, Hongkong),  
Young Joon Hong (Chonnam National Univ.)  
**Panelist :** Bill Gogas (Metropolitan General Hosp., Greece),  
Teruo Noguchi (National Cerebral and Cardiovascular Center, Japan),  
Ajar Kochar (Brigham and Women's Hosp., USA), Sang-Hyup Lee (Yonsei Univ.),  
Yongwhan Lim (Chonnam National Univ.), Dae-hwan Bae (Bucheon Sejong Hosp.),  
Jeong Tae Byoun(Wonkwang Univ.), Yonghoon Shin(Korea Univ.)

11:00 - 11:30 **Case 11 (CNUH): Shock**  
**1st operator :** Min Chul Kim (Chonnam National Univ.)  
**2nd operator :** Yongwhan Lim (Chonnam National Univ.)

11:30 - 11:35 **Case 11 : Wrap-up**

11:35 - 11:45 **Featured lecture: Impella 2026: Much has been learned, more to discover**  
*Kirk N Garratt (Christiana Care, USA)*

11:45 - 12:15 **Case 12 (SNUHBH): Shock**  
**1st operator :** Hyoung Won Cho (SNUHBH)

12:15 - 12:20 **Case 12 : Wrap-up**

**12:30 - 13:10**    **Sponsored Luncheon Session** Donga ST **KOR**  
**Moderator** : Youngkeun Ahn (Chonnam National Univ.)  
**Panelist** : Doo Sun Sim (Chonnam National Univ.), Woo Jin Kim (Kwangju Christian Hosp.), Sang-Cheol Cho (Yeosu Jeil Hosp.)

12:30 - 12:45    **Cardiovascular disease and Antiplatelet drugs**  
*Min Chul Kim / Chonnam National Univ.*

12:45 - 13:00    **New Horizons in Dyslipidemia: The Impact of Rosuvastatin and Ezetimibe Combination Therapy**  
*Seok Oh (Chonnam National Univ.)*

13:00 - 13:10    **Discussion**

**14:00 - 15:20**    **Meet the Masters II** **ENG**  
**Moderator** : Hyo-Soo Kim (Seoul National Univ.), Youngkeun Ahn (Chonnam National Univ.)  
**Panelist** : Eun-Seok Shin (Ulsan University Hosp), Weon Kim (Kyung Hee Univ.), Chang-Wook Nam (Keimyung Univ.), Jung Sun Kim (Yonsei Univ.), Kyung Woo Park (Seoul National Univ.), Jang Hoon Lee (Kyungpook National Univ.), Sang-Wook Kim (Chung-Ang Univ.), Joon-Hyung Doh (Inje Univ.)

14:00 - 14:15    **From idea to impact: navigating the path to high-impact publication in cardiovascular research**  
*Flavia Geraldès (The Lancet, UK)*

14:15 - 14:30    **Winning the Peer Review Battle: Practical Lessons From A Deputy Editor and Author**  
*Duk-Woo Park (Asan Medical Center)*

14:30 - 14:45    **From Asia to the world: lessons from the AFIRE trial and beyond**  
*Satoshi Yasuda (Tohoku University, Japan)*

14:45 - 15:00    **From Bedside Insight to Published Evidence: A Journey in Acute Myocardial Infarction Research**  
*Youngkeun Ahn (Chonnam National Univ.)*

15:00 - 15:20    **Discussion**

15:30 - 16:00    *Coffee Break*

**16:00 - 17:20**    **Hot Trials in Korea** **ENG**  
**Moderator** : Myung Ho Jeong (Gwangju Veterans Hosp.), Youngkeun Ahn (Chonnam National Univ.)  
**Panelist** : Ju Han Kim (Chonnam National Univ.), Keun Ho Park (Chosun Univ.), Doo Sun Sim (Chonnam National Univ.), Kyung Hoon Cho (Chonnam National Univ.), Kwan Yong Lee (Catholic Univ.), Yongwhan Lim (Chonnam National Univ. ), Dae Young Hyun (Chonnam National Univ. ), Seokhun Yang (Seoul National Univ.)

16:00 - 16:20    **TAILORED-CHIP**  
*Do-Yoon Kang (Asan Medical Center)*

16:20 - 16:40    **ADAPT-AF-DES**  
*Sang-Hyup Lee (Yonsei Univ.)*

16:40 - 17:00    **OPTION-STEMI**  
*Min Chul Kim (Chonnam National Univ.)*

17:00 - 17:20    **Discussion**

2F Arena I

09:00 - 10:20

**GICS-TAMIS** ENG

**Moderator :** Chun-Yao Huang (Taipei Medical University Hospital, Taiwan),  
Yougkeun Ahn (Chonnam National Univ.), Weon Kim (Kyung Hee Univ.)

**Panelist :** Cheng Hung Chiang (Kaohsiung veteran general Hosp., Taiwan),  
Wei-Chun Huang (Pingtung Christian Hosp., Taiwan),  
Cheng-Hsueh Wu (Taipei Veterans General Hosp., Taiwan), Jong-Il Park (Yeungnam Medical Center),  
Jeong Cheon Choe (Pusan National Univ), Tae Hyun Yang (Inje Univ.)  
You Jeong Ki (UiJeongbu Eulji Medical Center), Byung-Sik Kim (Hanyang Univ.)

09:00 - 09:15

**Prior Antiplatelet Exposure and Clinical Outcomes Among Korean Patients With Acute Myocardial Infarction**

*Seok Oh (Chonnam National Univ.)*

09:15 - 09:30

**Antiplatelet therapy in ACS: An East Asian perspective - Rethinking risk, redefining strategy**

*Chien-Yi Hsu (Taipei Medical University Hospital, Taiwan)*

09:30 - 09:45

**Stent or Drug-coated balloon in Patients with Repeated In-stent Restenosis?**

*Sang Min Park (Eulji Univ.)*

09:45 - 10:00

**TBC - Case Manager-Centered Collaborative Care Model to Improve Lipid Lowering Target for the Care of Acute Myocardial Infarction in A Medical Center in Taiwan**

*Chun-Chih Chiu (Shuang Ho Hospital, Ministry of Health and Welfare, Taiwan)*

10:00 - 10:20

**Discussion**

10:30 - 11:00

**Coffee Break**

11:00 - 12:20

**Aorta** ENG

**Moderator :** Ju Han Kim (Chonnam National Univ.), Kwang-Hun Lee (Hanmaeum Medical Center)

**Panelist :** Kyo Seon Lee (Chonnam National Univ.), Jungnam Kwon (Wonkwang Univ.),  
Sang Min Kim (Chungbuk National Univ), Won Yu Kang (Gwangju Veterans Hosp.),  
Wonho Kim (Eulji Univ.), Joon Ho Ahn (Chonnam National Univ.),  
Hong Sung Jung (Chonnam National Univ.)

11:00 - 11:15

**Key clinical features suggesting heritable thoracic aortic disease**

*Taek Kyu Park (Samsung Medical Center)*

11:15 - 11:30

**Practical guide for interpreting Next-Generation Sequencing reports in Heritable Thoracic Aortic Disease**

*Ha Lee (Ewha Womans Univ.)*

11:30 - 11:45

**Use of Robotic Vascular Surgery as an alternative to Open Vascular Surgery – how to change your practice**

*Ross Milner (Univ. of Chicago, USA)*

11:45 - 12:00

**Clinical features and early and long-term outcomes of aortic surgery in adults with Kommerell's diverticulum with aberrant subclavian artery**

*Yoshimasa Seike (National Cerebral and Cardiovascular center, Japan)*

12:00 - 12:20

**Discussion**

**12:30 - 13:10**     **Sponsored Luncheon Session Jeil** KOR  
**Moderator** : Young Joon Hong (Chonnam National Univ.)  
**Panelist** : Joon Ho Ahn (Chonnam National Univ.), Seong Ho Park (Mokpo Hankook Hosp.),  
 Donghan Kim (Gwangju Veterans Hosp.), Donghan Kim (Gwangju Veterans Hosp.)

12:30 - 12:45     **Clinical Rationale for Acid Suppressants in Cardiology A Multidisciplinary Perspective**  
*Kyung Hoon Cho (Chonnam National Univ.)*

12:45 - 13:00     **Effective Therapies for High-Risk Dyslipidemia Patients Who Need Aggressive LDL-C Lowering**  
*Hyun Wook Kim (GwangJu Christian Hosp.)*

13:00 - 13:10     **Discussion**

**14:00 - 15:30**     **KCTA II Nurse & Allied Professionals Session II** KOR  
**Facilitator** : Kyung-Soo Oh (Chonnam National University Hospital)

**Session 3**     **Special Lectures**  
**Moderator** : Jeong-Hun Kim (Chonnam National University Hosp.), Tae Woo Kim (Kangbuk Samsung Hosp.),  
**Panelist** : Byoung-Won Cheon (Korea University Guro Hosp.), Soon Ho Kwon (Konyang University Hosp.),  
 Tae Yeon Kim (Korea University Anam Hosp.), Dong-Su Lee (Wonkwang University Hosp.),  
 Young Eun Lee (Jeju Halla Hosp.), Tae Jung Moon (Yeosu Jeil Hosp.),  
 Chang Sun Park (Severance Cardiovascular Hosp.),  
 Geol Soo Song (Bundang Seoul National University Hosp.)

14:00 - 14:15     **Impella Overview**  
*Min Chul Kim (Chonnam National University Hosp.)*

14:15 - 14:30     **ECMO Overview**  
*Yongwhan Lim (Chonnam National University Hosp.)*

14:30 - 14:40     **Discussion**

**Session 4**     **MCS (mechanical circulatory support)**  
**Moderator** : So Young Kim (Severance Cardiovascular Hosp.), Min-Suk Lee (Asan Medical Center)  
**Panelist** : Sang-Hyeon Choe (Chonnam National University Hosp.), Min Jun Jo (Chungbuk University Hosp.),  
 Jong Tae Kim (VHS Gwangju Hosp.), Seong-Hun Jeong (Gwangju KS Hosp.),  
 Dong Jun Lee (Seoul National University Hosp.), Seung-Hun Lee (Samsung Medical Center),  
 Sung Wook Kim (Bundang Seoul National University Hosp.), Sang-Man Park (Samsung Medical Center)

14:40 - 14:50     **Cardiogenic Shock 환자의 초기 대응**  
*In Seon Song (Severance Cardiovascular Hosp.)*

14:50 - 15:00     **ECMO A to Z & Management**  
*Woong Seo (Korea University Guro Hosp.)*

15:00 - 15:10     **Impella A to Z & Management**  
*Soo Ji Kim (Bundang Seoul National University Hosp.)*

15:10 - 15:20     **Discussion**

15:30 - 16:00     **Coffee Break**

16:00 - 17:00

### Asia-Pacific II Case Based Learning **ENG**

**Moderator :** Young Joon Hong (Chonnam National Univ.), Yu-Chen Wang (Asia University Hosp., Taiwan),

**Panelist :** Donna Shu-Han Lin (Shin Kong Wu-Su Memorial Hosp., Taiwan),  
Zhe-Hao Piao (Wenzhou Univ., China), Lei Yao (Shouguang People's Hosp., China)  
Dong Hyun Joo (Wonkwang Univ.), Sang Hoon Lee (Chonnam National Univ.),  
Seong Ho Park (Mokpo Hankook Hosp.), Yoonmin Shin (Miraero21 Hosp.)

16:00 - 16:12

### Acute limb ischemia redefined: Integrating modern strategies in real-world scenarios

*Po-Chao Hsu (Kaohsiung Medical University Hosp., Taiwan)*

16:12 - 16:24

### My worst DCB Case: Do not neglect the patient characteristics

*Joon Ho Ahn (Chonnam National Univ.)*

16:24 - 16:36

### TAVI Valve Migration: Prevention and Management

*Futoshi Yamanaka (Shonan Kamakura General Hosp., Japan)*

16:36 - 16:48

### Early VA-ECMO-Supported Revascularization in Acute Left Main Coronary Artery Occlusion Complicated by Profound Cardiogenic Shock

*Chang Hoon Kim (Jeonbuk National Univ.)*

16:48 - 17:00

### When structural heart disease meets ACS: How valve pathology rewrites diagnosis, risk stratification, and management

*Hao-Yun Lo (Shin Kong Wu Ho-Su Memorial Hosp., Taiwan)*

Discussion

## 2F Arena II

09:00 - 10:20

### Critical Care in Cardiology **KOR**

**Moderator :** Min Chul Kim (Chonnam National Univ.), Yonghun Jung (Chonnam National Univ.)

**Panelist :** So-Young Jeon (Chungnam National Univ.), Sungho Jo (Wonkwang Univ.)  
Yonghoon Shin (Korea Univ.), Sang Hun Lee (Chonnam National Univ.),  
Sang-hyup Lee (Yonsei Univ.), Jeong Tae Byoun (Wonkwang Univ.)  
Chang Hyeon Kim (Chonnam National Univ.), Eun Jin Park (Korea Univ.)

09:00 - 09:15

### Optimizing Critical Cardiac Care: Comparing Closed and Open CICU Systems

*Ah-Ram Kim (Asan Medical Center)*

09:15 - 09:30

### The Cardiac Intensivist's Perspective: Integrating Care Across Departments

*Hyoung Won Cho (Seoul National Univ.)*

09:30 - 09:45

### Heart-Brain Synergy: The Neurologist's Role in Cardiac Critical Care

*Hyun Soo Kim (Chonnam National Univ.)*

09:45 - 10:00

### "ICU Dilemmas: Futility, Ethics, and Palliative Pathways"

*Yonghoon Jeong (Chonnam National Univ.)*

10:00 - 10:20

Discussion

10:30 - 11:00

Coffee Break

**11:00 - 12:20**    **DES II with KIMDS** ENG  
**Moderator** : Myung Ho Jeong (Gwangju Veterans Hospital), Sang-Wook Kim (Chung-Ang Univ.), Seung Woon Rha (Korea Univ.)  
**Panelist** : Juan Luis Gutiérrez-Chico (Jena University Hosp., Germany), Jin Bae Lee (Daegu Catholic Univ.), Seong Ill Woo (Inha Univ.), Dong-Weon Lee (Chonnam National Univ.), Doo Sun Sim (Chonnam National Univ.), Sang Yup Lim (Korea Univ.)

11:00 - 11:15    **Beyond the Main Vessel: The Role of Side Branches in Coronary Hemodynamics and Plaque Progression**  
*Anantharaman Ramasamy (Barts Heart Center, UK)*

11:15 - 11:30    **The impact of coronary disease on vascular healing and drug distribution in the coronary arterial wall following drug eluting stent placement**  
*Heleen van Beusekom (Erasmus Univ., The Netherlands)*

11:30 - 11:45    **Mechanobiology-Inspired Intravascular CTC Capture Coating on Interventional Medical Devices for High-Throughput Blood Filtration**  
*Kyoungin Kang (Jeonbuk National Univ.)*

11:45 - 12:00    **Research on Endothelialization-Promoting Stents in Next-Generation Cardiovascular Stents**  
*Dae Sung Park (Chonnam National Univ.)*

12:00 - 12:20    **Discussion**

**12:30 - 13:10**    **Sponsored Luncheon Session-Tapped Abbott** KOR  
**Moderator** : Joon Ho Ahn (Chonnam National Univ.)  
**Panelist** : Byung-Hee Hwang (Catholic Univ.), Seung Hun Lee (Chonnam National Univ.), Jung-Hee Lee (Wonju Severance hosp.)

12:30 - 12:40    **Orbital Atherectomy for plaque modification and lumen gain: Bench test and clinical application**  
*Kwan Yong Lee (Catholic Univ.)*

12:40 - 12:50    **Clinical Insight with OAS**  
*Ki Hong Choi (Sungkyunkwan Univ.)*

12:50 - 13:10    **Discussion**

**14:00 - 15:20**    **CTO** ENG  
**Moderator** : Myung Ho Jeong (Gwangju Veterans Hosp.), Hun Sik Park (Kyungpook National Univ.)  
**Panelist** : Yoshihisa Kinoshita (Toyohashi Heart Center, Japan), Chien-Yu Hsu (Taipei Medical University Hosp., Taiwan), Cheng-Hsueh Wu (Taipei Veterans General Hosp., Taiwan), Cheol Ung Choi (Korea Univ.), Sungho Jo (Wonkwang Univ.), Song YI Kim (Jeju National Univ.), Seung Woon Rha (Korea Univ.), Jung Ho Heo (Kosin Univ.)

14:00 - 14:15    **Retrograde approach in CTO PCI**  
*Dae Young Hyun (Chonnam National Univ.)*

14:15 - 14:30    **How to increase PCI success rates in complex CTO**  
*Byung-Hee Hwang (Catholic Univ.)*

14:30 - 14:45    **Guide catheter extension during CTO procedure: A ticket for higher success**  
*Jong-Young Lee (Hallym Univ.)*

14:45 - 15:00    **Retrograde CTO PCI in the IVUS guided tip-detection ADR era**  
*Satoru Otsuji (Higashi Takarazuka Satoh Hosp., Japan)*

15:00 - 15:20    **Discussion**

15:30 - 16:00    **Coffee Break**

2F Arena III

09:00 - 10:20

**GICS-APCMC** ENG

**Moderator :** Yu Kataoka (National Cerebro-Cardiovascular Center, Japan),  
Youngkeun Ahn (Chonnam National Univ.), Chang-Wook Nam (Keimyung Univ.)

**Panelist :** Yu-Chen Wang (Asia University Hosp., Taiwan),  
Ting Yin (The Second Affiliated Hospital of Zhejiang University, China),  
Lei Yao (Shouguang People's Hospital, China), Seung Hwan Han (Gachon Univ.),  
Jung-Joon Cha (Korea Univ.), Sung A Bae (Yonsei Univ.), Won Yu Kang (Gwangju Veterans Hosp.)

09:00 - 09:15

**Artificial Intelligence Applications in Acute Myocardial Infarction Care**

*Kyung Hoon Cho (Chonnam National Univ.)*

09:15 - 09:30

**Real-world lipid management after ACS in Japan and strategies to achieve LDL-C targets**

*Satoshi Honda (National Cerebro-Cardiovascular Center, Japan)*

09:30 - 09:45

**Bridging the gap: Integrating AI into holistic CKM syndrome management**

*Donna Shu-Han Lin (Shin Kong Wu Ho-Su Memorial Hosp., Taiwan)*

09:45 - 10:00

**Association Between Achieved Apolipoprotein B Levels and Percent Atheroma Volume: A Systematic Review and Meta-analysis**

*Masashi Fujino (National Cerebral and Cardiovascular Center, Japan)*

10:00 - 10:20

**Discussion**

10:30 - 11:00

**Coffee Break**

11:00 - 12:20

**GICS-KSMI II** ENG

**Moderator :** Youngkeun Ahn (Chonnam National Univ.), Jin-Yong Hwang (Gyeongsang National Univ.)

**Panelist :** Jang Hoon Lee (Kyungpook National Univ), Soon-Jun Hong (Korea Univ.),  
Sang-Rok Lee (Jeonbuk National Univ.), Song YI Kim (Jeju National Univ.),  
In Ho Yang (Kyung Hee Univ.), Dong-Hyun Joo (Wonkwang Univ.),  
Young-hoon Jeong (Chung-Ang Univ.), Tae Hyun Yang (Inje Univ.),

11:00 - 11:15

**Novel Medical Therapeutics in AMI: What's Coming Next**

*Takahito Doi (Kyoto Prefectural Univ., Japan)*

11:15 - 11:30

**Beta-blockers in AMI: Who Really Benefits Today**

*Joo-Yong Hahn (Sungkyunkwan Univ.)*

11:30 - 11:45

**Lipid-lowering Therapy: LDL-C and Beyond**

*Yu Kataoka (National Cerebro-Cardiovascular Center, Japan)*

11:45 - 12:00

**Recent Trials Antiplatelet Therapy for Patients after PCI**

*Seokhun Yang (Seoul National Univ.)*

12:00 - 12:20

**Discussion**

14:00 - 15:20

**Imaging and physiology** **KOR**

**Moderator** : Bon-Kwon Koo (Seoul National Univ.), Young Joon Hong (Chonnam National Univ.)

**Panelist** : Sung Woo Cho (Inje Univ.), Sang-Cheol Cho(Ueosu Jeil Hosp.), Kwan Yong Lee (Catholic Univ.), Dong Hyun Gim (Sungkyunkwan Univ.), Jung-Joon Cha (Korea Univ.), Sang Hoon Lee(Chonnam National Univ.), Soohyung Park(Korea Univ.), Joon Ho Ahn (Chonnam National Univ.)

14:00 - 14:15

**Predictors for Vulnerable Plaque in Functionally Significant Lesion**

*Seokhun Yang (Seoul National Univ.)*

14:15 - 14:30

**Intra-coronary imaging in DCB: From Lesion Selection to Post-Procedural Assessment**

*Dong Oh Kang (Korea Univ.)*

14:30 - 14:45

**Coronary microvascular dysfunction: Can we just neglect it? May be not**

*Joo Myung Lee (Sungkyunkwan Univ.)*

14:45 - 15:00

**Image-based Physiology: The game just started it.**

*You Jeong Ki (Eulji Univ.)*

15:00 - 15:20

**Discussion**

15:30 - 16:00

**Coffee Break**

16:00 - 17:00

**Oral Competition** **ENG**

**Moderator** : Seung Uk Lee (Gwang Ju Christian Hosp.)

**Panelist** : Sang-Hyun Lee (Miraero 21 Medical Center), Sang Cheol Cho (Gwangju KS Hosp), Sang Cheol Cho (Yeosu Jeil Hosp.), Woo Jin Kim (Kwangju Christian Hosp.)

16:00 - 16:15

**Ultra-short ( $\leq 1$  Month) versus Standard-Duration Dual Antiplatelet Therapy in Acute Coronary Syndrome Patients Undergoing PCI**

*Hendrianus (Chung-Ang Univ. Gwangmyeong Hosp.)*

16:15 - 16:30

**Exposure to volatile organic compounds co-exposure is associated with risk of obesity and potential mediators among USA general adults**

*Ting YIN (The Second Affiliated Hospital of Zhejiang University, China)*

16:30 - 16:45

**Efficacy of Rotational Atherectomy for Calcified Nodules: Clinical Impact and Acute Imaging Insights From a Multicenter IVUS Study**

*Naoya Yabumoto (National Cerebral and Cardiovascular Center, Japan)*

16:45 - 17:00

**Massive positive remodelling after PCI of CTO, resulting in gross late-acquired undersizing**

*Jimena Gonzalez Huerta (Universidad Alfonso X el Sabio, Spain)*

**Discussion**